

【TY280 系列产品介绍】

- 常规通用三相四线电源线滤波器（带中线）；
General power line filter for three phase and four lines
- 具备优异的共模和差模干扰抑制性能；
Excellent interference-suppression for CM and DM
- 采用高品质元件，性价比高。
Using high quality components, provided high ratio of performance to cost make
- 多用于电力电子，各类工业噪音环境。
Available for electronic electronics and other industrial noise environments



Specification

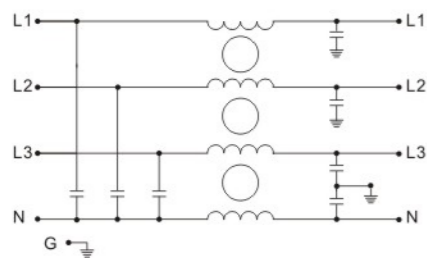
(规格表)

滤波器型号	端接方式	额定电流	额定电压	工作频率	耐压等级	绝缘电阻	工作温度	最大漏电流
PARTNo	Connection IN OUT	Rated current	Rated voltage	Line frequency	Hipot test Voltage	Insulation Resistance	Temperature Range	Max leakage current
TY280S-6		6A	250/440VAC	50/60Hz	线-中 (L-L/N) 1450VDC/1Min 线-地 (L-G) 2700VDC/1Min	线-地(L-G): ≥ 100MΩ @500VDC	25/085/21	1.5mA
TY280S-10		10A						1.5mA
TY281S-6		6A						1.5mA
TY281S-10		10A						1.5mA
TY281W-6		6A						1.5mA
TY281W-10		10A						1.5mA
TY280M-20		20A						2.5mA
TY280M-30		30A						2.5mA
TY280M-40		40A						2.5mA
TY280M-50		50A						2.5mA
TY280M-80		80A	2.5mA					
TY280M-100		100A	2.5mA					

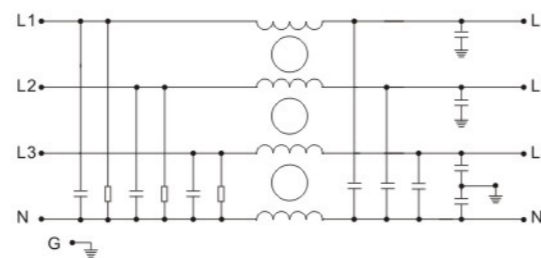
Schematic

电气原理图

TY281S/281W 系列



TY280系列



Insertion Loss

Tested @ 50 ohm system as IEC/CISPR :17

滤波器型号	共模衰减 (Comm.Mode) -in Mhz						差模衰减 (Diff.Mode) -in Mhz					
	PART number	0.15	0.5	1.0	5.0	10	30	0.15	0.5	1.0	5.0	10
TY280S-6	17	28	34	38	42	38	8	15	24	51	40	33
TY280S-10	12	28	35	38	45	40	11	20	26	35	31	31
TY281S-6	14	22	30	31	36	30	6	11	20	37	32	25
TY281S-10	10	21	29	30	35	20	7	11	20	35	30	21
TY281W-6	14	22	30	31	36	30	6	11	20	37	32	25
TY281W-10	10	21	29	30	35	20	7	11	20	35	30	21
TY280M-20	10	24	32	35	40	36	11	20	26	42	31	31
TY280M-30	7	20	25	32	35	30	10	20	26	42	31	30
TY280M-40	12	27	35	39	40	33	11	25	36	45	41	34
TY280M-50	9	22	28	34	35	30	11	22	29	42	33	30
TY280M-80	11	25	33	36	40	33	11	23	28	40	32	30
TY280M-100	8	21	27	32	35	28	10	22	29	40	33	30

Mechanical Specs

(安装尺寸图)

单位(Unit): mm

