

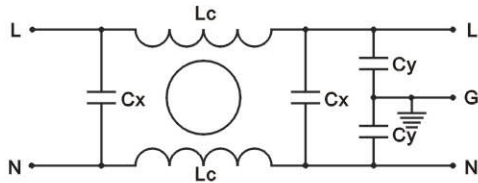
### 【TY510系列产品介绍】

- 专为抑制直流电源线干扰设计开发;  
Special design for direct current(DC) power line
- 优异的共模与差模干扰抑制能力;  
Excellent interference-suppression for CM and DM
- 性能优异, 易于安装;  
General purpose ,easy to install
- 多用于开关电源, 数据通信等等直流供电设备。  
Available for electronic equipments and measuring instruments(DC side)



### Schematic

电气原理图



Part Number

滤波器型号	端接方式		额定电流	泄露电流
Part NO	IN	OUT	Rated current	Leakage current
TY510S-3			3A	DC
TY510S-6			6A	DC
TY510S-10			10A	DC
TY510S-16			16A	DC
TY510S-20			20A	DC

### Electrical Specs

(电气参数表)

最小插入损耗dB (50Ω电路)

额定电压:	80VDC / 250VDC
额定电流:	@40°C
耐电压测试:	
Line to Ground:	500VDC, 1 min
Line to Line:	350VDC, 1 min
气候类别:	HPF(25/085/21)

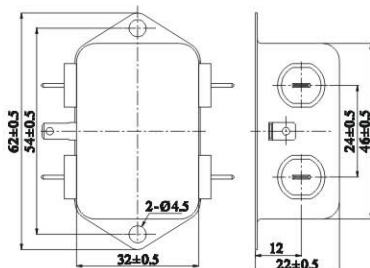
电流	类别	频段-MHz					
		0.15	0.5	1.0	5.0	10	30
TY510S-3	共模	41	61	62	67	70	55
	差模	52	73	75	61	61	55
TY510S-6	共模	32	48	55	72	72	54
	差模	70	72	77	64	63	57
TY510S-10	共模	29	45	53	70	70	55
	差模	57	75	75	61	64	60
TY510S-16	共模	18	35	43	60	63	51
	差模	54	71	75	56	65	53
TY510S-20	共模	21	38	46	61	70	50
	差模	57	70	72	55	61	53

### Mechanical Specs

(安装尺寸图)

单位(Unit): mm

For:TY510S-3/6/10



For:TY510S-16/20

